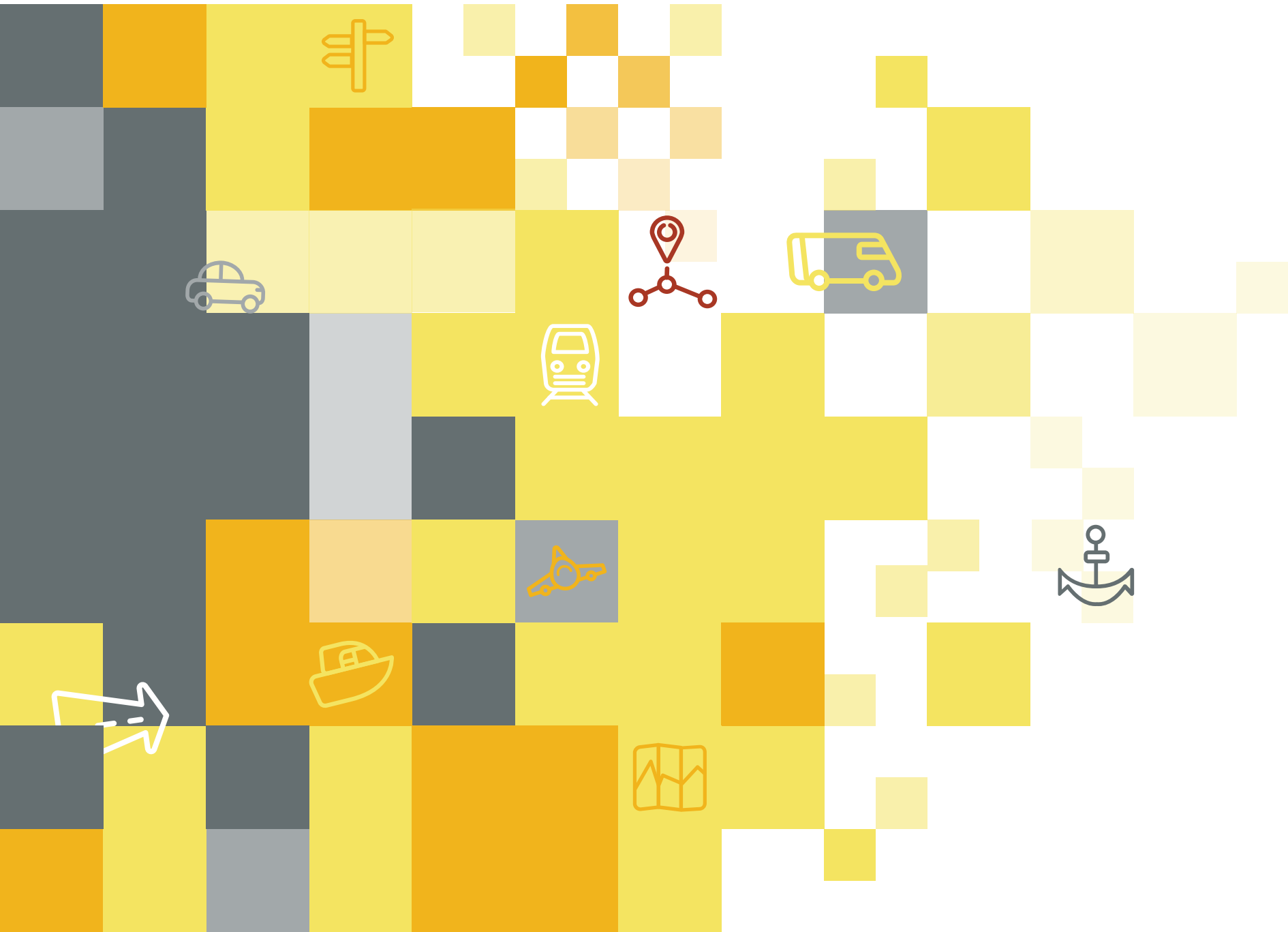
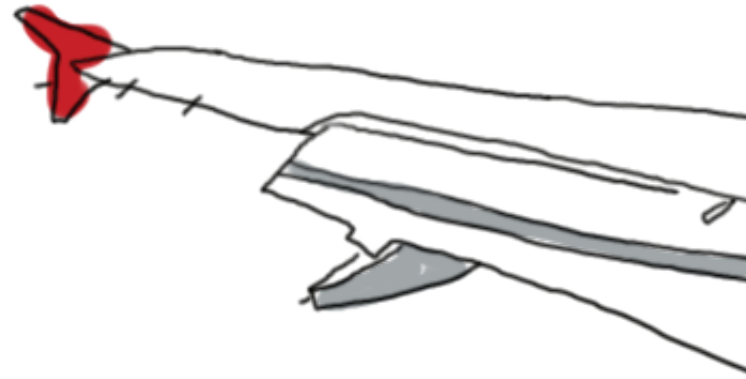


Transworld

realtime logistics

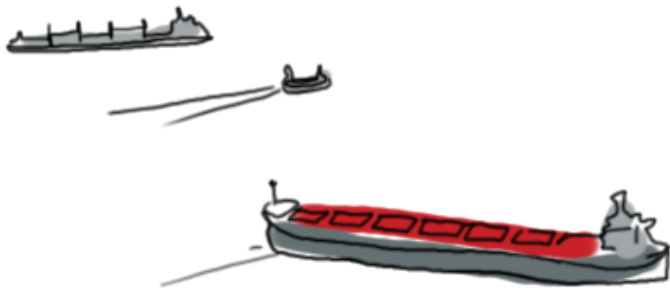
Cargo



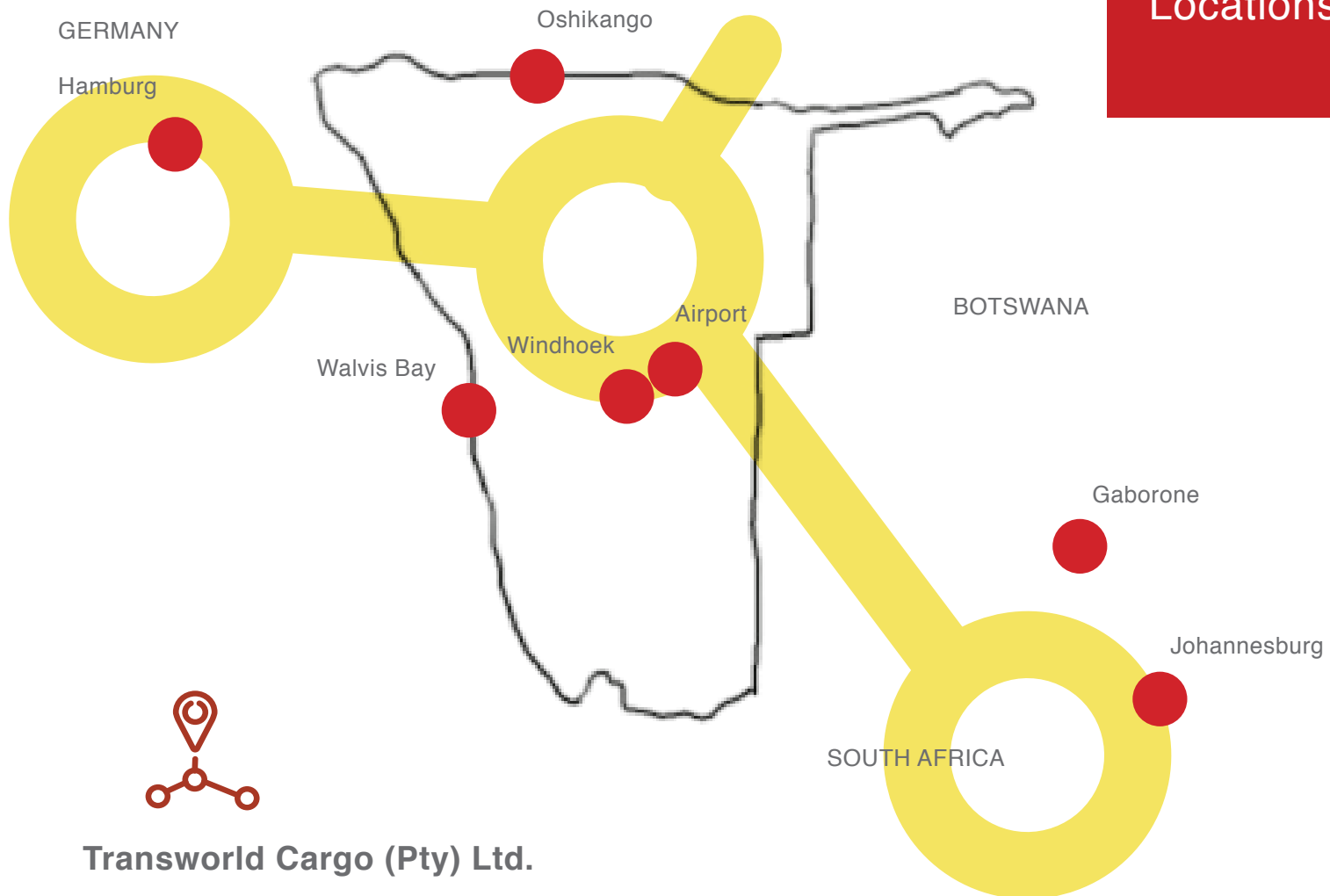


Content	2
Locations	3
Key Principles	4
Corporate Values	5
Quality Management	6
Sea Freight	7
Air Freight	8
Warehousing & Distribution	9
Courier Services	10
Specialized Services	11
Walvis Bay	12
Cross-Border	13
Team	14
Country Information	15

2 Content



Locations 3



Transworld Cargo (Pty) Ltd.

is a Namibian forwarding company, founded in 1986 and since then operating successfully in Namibia and Southern Africa, achieving steady and continuous growth.

With our compliment of 100 plus staff members, we offer the complete range of freight forwarding services, shipping services, customs clearance as well as fully inte-grated logistic solutions for our customers with the emphasis on efficiency and reliability. Today Transworld Cargo operates 7 offices in Namibia, South Africa, Botswana and Germany. Internationally recognized, Transworld Cargo is part of a network of agents and logistics providers from all over the world, who offer reliable and efficient logistics services to its customers.

Committed to a sustainable business approach we are guided by the following working principles:

- Build long-term customer-oriented relationships
- Provide complete integrated and innovative logistic services with an emphasis on efficiency and reliability
- Handle all our customer services and orders professionally and effectively



4 Key Principles

- Encourage Team Motivation and Training
- Develop and continuously invest in environmental performance, local freight and logistic sectors
- Stay true to our Social Commitment
- Provide equal employment opportunity
- Be at the forefront of quality assurance through constant new idea generation
- Be compliant with Societies' law and regulations, in which our employees live and work
- Further develop the dialogue and long-term relationship with different parties



ALWAYS strive for customer success

BE solution driven
& 1-step ahead



COMMIT to give it your best
& do it right the first time

DEVELOP, nurture
& value our people

EXCEL through team-work
& tolerance

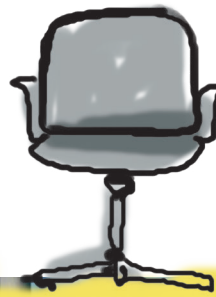
FOSTER high standards of work ethics

GIVE back to your social
& natural environment



Corporate
Values 5






Since 1996 Transworld Cargo is certified with the international ISO 9001 Award for Quality Management Systems

Our policy is to provide services which meet the customer's needs and expectations. It is recognized that the most cost effective way of achieving the required quality of a product or service is to do each job "Right the First time". The Quality Management System covers all operational and organizational processes to guarantee a high quality standard for customers. Customer requirements are fulfilled with our well trained and highly competent staff.

www.transworldcargo.net


JUST PUT
YOUR THINGS
INTO A BOX
WE DO THE REST


GROUPAGE CONTAINER
HAMBURG
WINDHOEK



Transworld
realtime logistics
Cargo 

Transworld Cargo is well geared to provide a **one-stop sea freighting service** to and from all major business centres around the globe. Our comprehensive infrastructure enables our customers the professional handling of cargo, whether general cargo, LCL or FCL shipments or break bulk services.

Specialized packaging skills ensure that your cargo is handled with utmost care. Our selection of reliable shipping lines and multi-modal routings makes a most cost efficient transport possible and ensures your cargo arrives at destination on time and safely.

Sea
Freight ⁷



Transworld Cargo has been a **reliable partner for worldwide air shipments since 1986**. We offer prompt, expedient air freight services on domestic, regional and international flights for all type of cargo, including temperature controlled and dangerous cargo.

Our airfreight portfolio includes:

- Direct international shipments on reliable scheduled airlines
- Worldwide consolidations or groupage services
- Full and part load charters
- Domestic air freight services
- Specialized air logistics services

8 Air Freight

Transworld Cargo has a direct EDI link with the customs clearing system which provides up-to-date information on SACU regulations and updated information on tariff amendments and costing.

Our staff is permanently trained on customs regulations which results in competent handling of all customs clearing queries for any kind of commodities.



Our proud record in the field of **domestic and regional surface transport (road and rail)** is based on our firm commitment to treat each and every consignment as a priority in respect of secure handling and safe transport. We offer our customers full truck loads as well as consolidation possibilities attracting cost efficient transport solutions from and to any destination within Southern Africa.

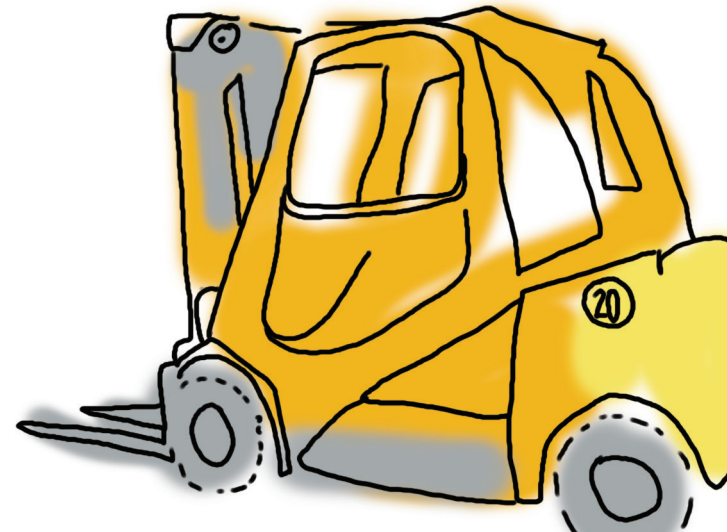
Our road freight services include:

- Full truck loads or consolidations
- Cost surveying and forward planning
- Border clearance (export and import)
- Bond Facilities for in transit shipments
- Special transport of project cargo

Transworld Cargo specializes in **storage of dry cargo as well as temperature sensitive goods**. We provide different types of warehouse facilities at different locations in Namibia: Bonded warehousing, customs licensed container terminals, covered storage for general and dangerous goods, cold storage up to -20C and open storage are offered.

All our warehouse facilities are equipped **with multi – racking systems** and security is provided 24 hours including camera surveillance and access control. **To meet today's logistics requirement for companies from different kind of sectors, Transworld Cargo also specializes in efficient picking and distribution methods for all kind of products.**

- Windhoek: 37,000 sqm (open storage) / 4,500 sqm (under roof) – bonded storage, container depot and cold storage
- Walvis Bay: 14,000 sqm (open storage) / 2100 sqm (under roof) – bonded storage and container depot
5,000 sqm (under roof) – dangerous goods storage
- Int. Airport: 5,000 sqm (open storage) / 600 sqm (under roof) – cold storage
- Oshikango: 2,300 sqm (open storage) / 750 sqm (under roof) – bonded storage



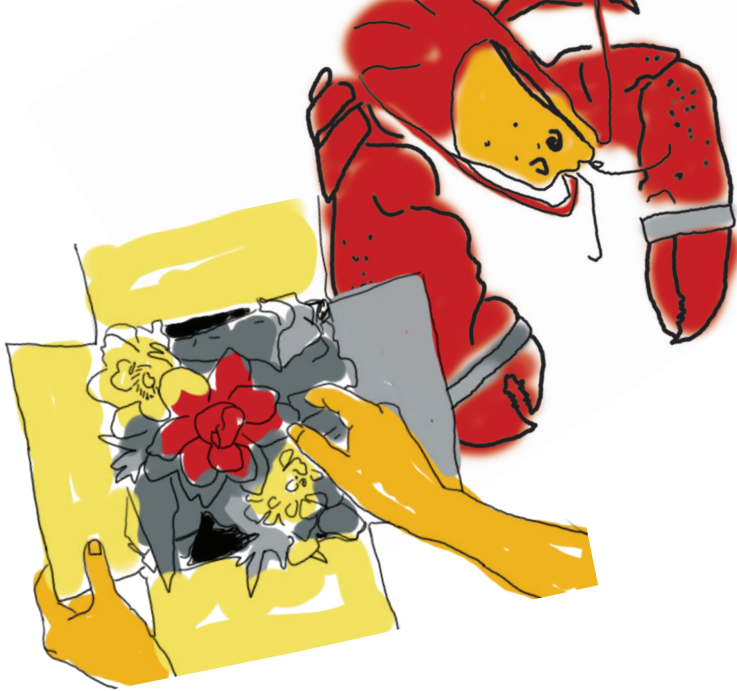
Warehousing & ⁹
Distribution

10 Courier Services

Transworld Cargo is the official service provider for UPS Supply Chain Solutions (UPS SCS) and provides international and regional courier services to and from Namibia. With our partner UPS as the largest express carrier and package delivery company in the world, we offer specialized transportation, logistics, capital and e-commerce services:

Our UPS courier services include:

- Regional and international UPS courier express services
- UPS Freight Forwarding Services (Supply Chain Solutions)
- UPS Distribution within Namibia



Specialized Services

11

Transworld Cargo provides secure, reliable and cost-efficient shipping time critical and / or sensitive goods from and to any country in the world. Our dedicated team of logistics specialists has the know how to provide specific tailor-made service packages catering for our customer's needs.

- International** Removal Services of personal effects including packing and unpacking
- Consultation** on national and international rules and regulations
- Specialized** services for vehicles and live animals
- Logistics** for frozen and fresh perishables goods
- Contract** Logistics
- Project** Cargo
- Dangerous** Goods

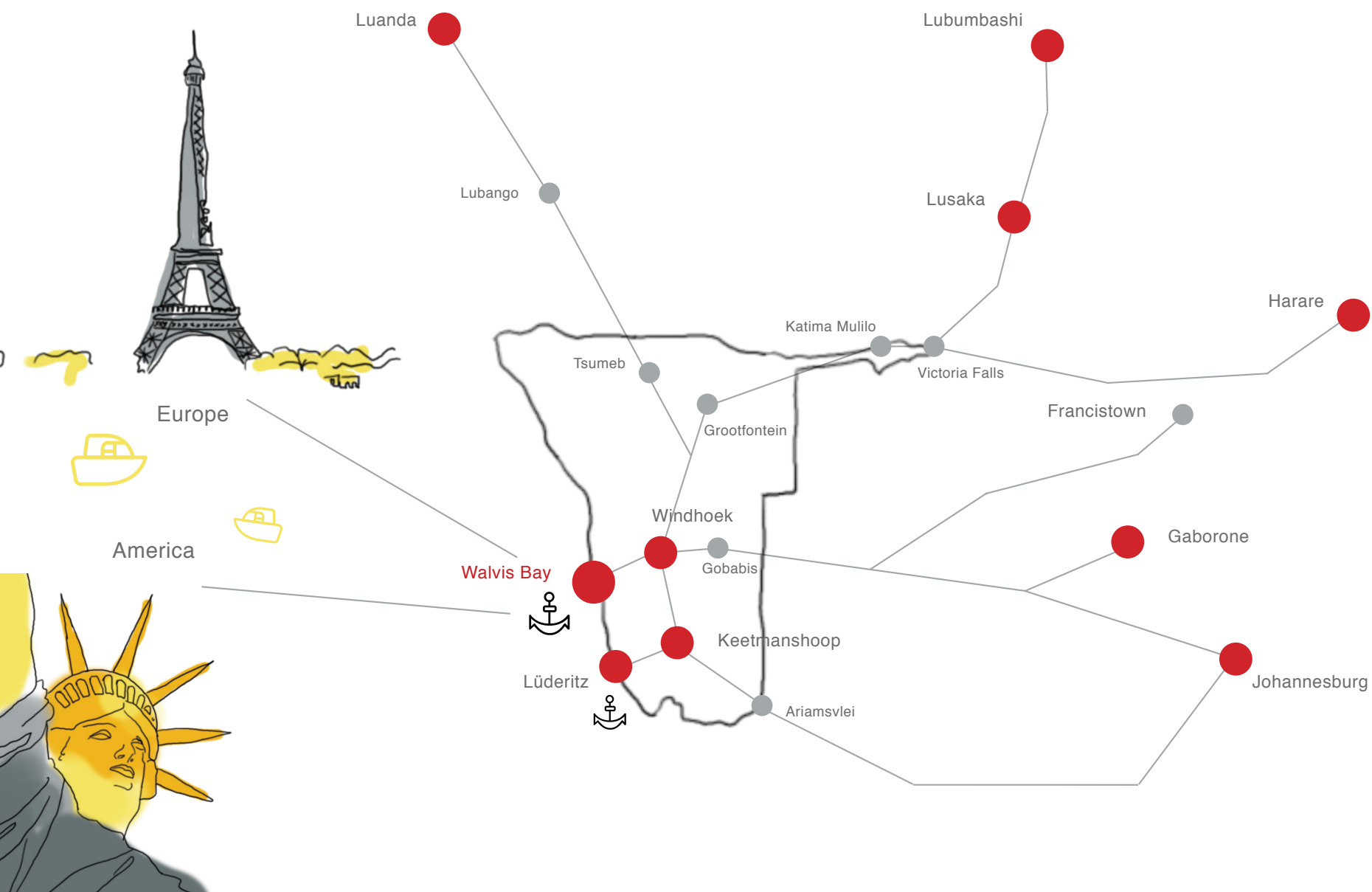


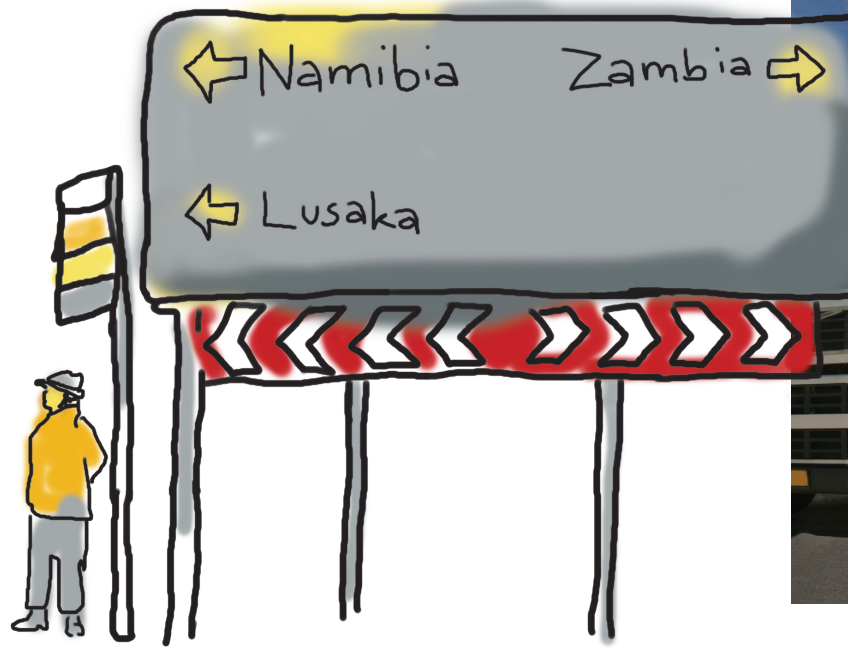
12 Walvis Bay

Strategically located half way down the coast of Namibia, with direct access to principle shipping routes, Walvis Bay is a natural gateway for international trade. With a depth of 12.8 meters the port offers high flexibility in port operations with free capacities on port, rail and road side.

Walvis Bay is by far the nearest port for the SACD community regarding destinations to and from Europe and America and will become an attractive alternative to the existing ports of South Africa as “first port of call”.

For the landlocked SADC countries it offers an increased potential for import and exports as well as time and cost savings on transport.





Transworld Cargo provides international logistic solutions across national boundaries

Time and Cost Savings

- Minimal sea borne transit times
- No port delays due to congestion or weather conditions
- Fast and efficient inland transit operations
- Resulting in considerable time saving of at least a week due to shorter transit times
- Time saving, plus incentive Corridor pricing structure, result in cost savings

Reliability and Predictability

- Import, Export and in transit clearing (bonded cargo)
- Cross-border clearance (regional surface transports)
- Modern and first class transport infrastructure in place
- Spare capacities on port, road, and rail side
- Ensures reliability and predictability of cargo deliveries
- Convenience
- High cargo security with low insurance risk

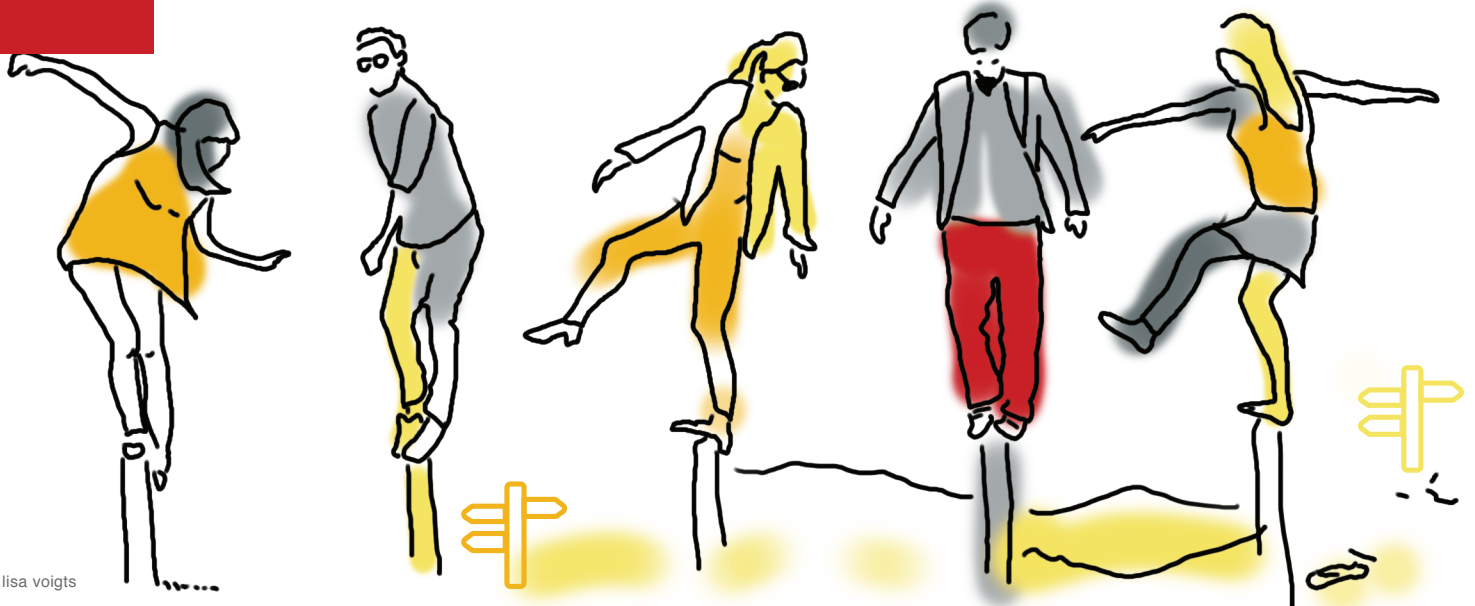
Cross-Border 13



Employees are our most important asset in our company. We believe that dedicated employees acting as entrepreneurs within the company guarantee the success and common future of our company. Every employee acts as a service provider for both, the customer and the company. Assuming personal responsibility means addressing problems or concerns and striving to solve them so that everyone's best interests are met.

Our golden rule in dealing with one another is taking care of each other and taking responsibility for each other.

14 Team





Official name:	Republic of Namibia
Capital:	Windhoek
Area:	824,269 square kilometers / 318,252 square miles.
Main cities:	Windhoek, Swakopmund, Walvis Bay.
Main harbours:	Port of Walvis Bay and Port of Luederitz.
Main airport:	Hosea Kutako International Airport.
Population:	2,800,000
Population density:	2 persons per square kilometre / 5.1 persons per square mile.
Languages:	Although English is the official language, most Namibians speak at least one indigenous language at home. Afrikaans and German are also spoken.
Religions:	Christian 90 per cent / Other or non-religious 10 per cent.
Type of government:	Republic
Independence:	21 March 1990 (from South African mandate).
Exports:	Diamonds, copper, gold, zinc, lead, uranium, cattle, processed fish, sheepskins
Imports:	Foodstuffs, petroleum products and fuel, machinery and equipment, chemicals
Industries:	Meatpacking, fish processing, dairy products, mining
Agriculture:	Mostly subsistence farming; cattle, sheep, goats, meat, milk, wool, crops: millet, roots and tubers, fruits.
Natural resources:	Diamonds, copper, uranium, gold, lead, tin, lithium, cadmium, zinc





Directors

Norbert Liebich
Olaf Liebich

n.liebich@transworldcargo.net
o.liebich@transworldcargo.net

Operations Management

Martin Gillmann

m.gillmann@transworldcargo.net

Quality Management &
Logistics Controlling

Burghardt Grimm

b.grimm@transworldcargo.net

Business Development

Fritz Kaufmann

f.kaufmann@transworldcargo.net

Finance Management

Kai Pretorius

k.pretorius@transworld.com.na

Imports

Peliwe Hauholo

p.hauholo@transworldcargo.net

Exports

Tara-Lee Lange

t.lange@transworldcargo.net

Projects

Senovia Katjiru

s.katjiru@transworldcargo.net

Automotive

Anne-Rose van der Merwe

a.vandermerwe@transworldcargo.net

Courier

Glenwill Basson

g.basson@transworldcargo.net

Roadfreight

Marius van Taak

m.vantaak@transworldcargo.net

Warehouse & Distribution

Oliviera Schaneck

o.schaneck@transworldcargo.net

Walvis Bay

David Leech
Kai Schnaitmann

d.leech@transworldcargo.net
k.schnaitmann@transworldcargo.net

Hamburg

Karin Fischer

k.fischer@transworldcargo.net



5 Von Braun Street
Southern Industrial Area
PO Box 6746, Ausspannplatz
Windhoek, Namibia

Tel: + 264 61 371100
Fax: + 264 61 371173
info@transworldcargo.net
www.transworldcargo.net